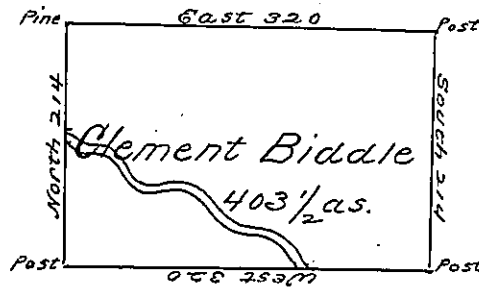


John Bidwell

John Briton



Edward Batholomew

Charles Biddle

Situate on the waters of Lake Erie in  
 Allegany County Surveyd the 16th of Sept. 1795  
 to Clement Biddle on his warrant dated the 30th  
 May 1792 Containing Four hundred three & a half  
 acres & allows.

Thos. Reed W.S.

Daniel Brodhead Esquire }  
 Surveyor General }

IN TESTIMONY that the above is a copy of the original remaining on file in  
 the Department of Internal Affairs of Pennsylvania, made  
 conformably to an Act of Assembly approved the 16th day of  
 February, 1833, I have hereunto set my Hand and caused  
 the Seal of said Department to be affixed at Harrisburg,  
 this fourth day of June 1901

*James W. Latta*  
 Secretary of Internal Affairs.